

MVP-METALL, 8XM12, 5POLE, PRE-WIRED CABLE

10.0m PUR 16x0,34+5x0,75, UL/CSA

8-way, 5-pole, DIAGNOSTIC

10.0 m

integrated electronic current monitoring with shutoff

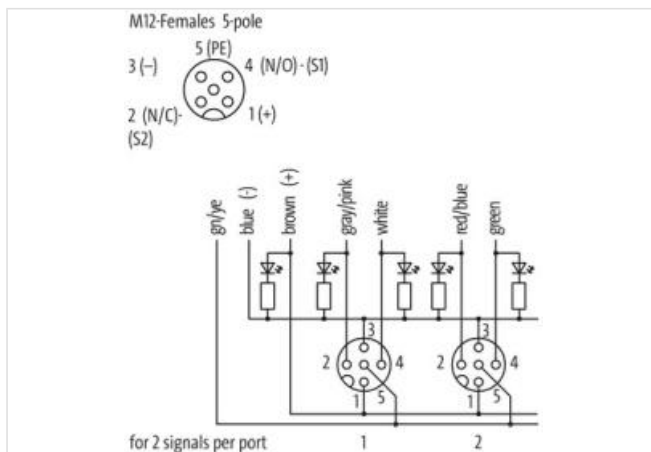
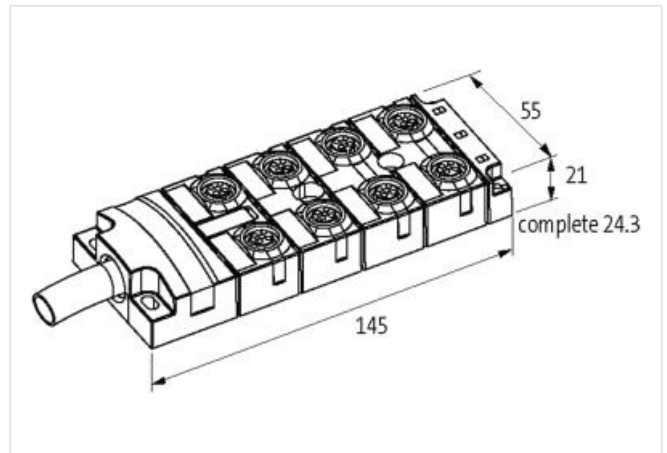
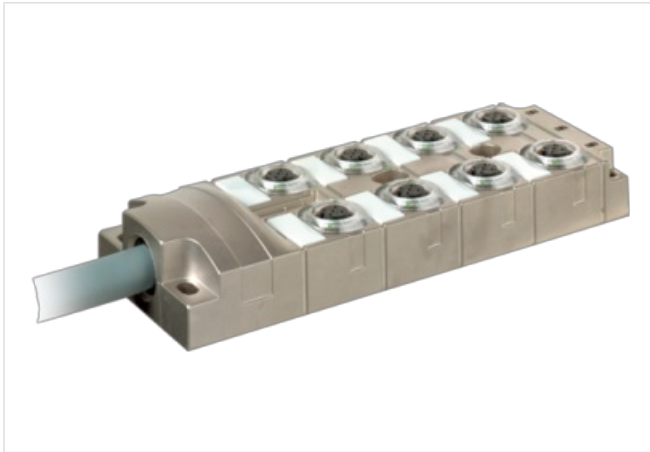
electronic diagnostic with ERROR LED

Further cable lengths on request.

All M12 ports are current monitored regarding 0 V total current (contact 3), and are switched off in case of overload or short-circuit (self-resetting). Supply voltage of other ports remains the same. In case of a fault the DIAGNOSTIC signal "active high" to the PLC (wire "brown" 2) drops from 24 V DC to 0 V. The operator can immediately react by analysing the diagnostic signal.

[Link to Product](#)

Illustration



Product may differ from Image



Classifications

ECLASS-6.0

27279219

ECLASS-6.1	27279219
ECLASS-7.0	27279219
ECLASS-8.0	27279219
ECLASS-9.0	27440108
ECLASS-10.1	27440108
ECLASS-11.1	27440108
ECLASS-12.0	27440108
ETIM-5.0	EC002585

Electrical data | Supply

Operating voltage DC	24 V
Current consumption max.	35 mA
Total current max.	10 A

Electrical data | Input

Current input full equipment min.	10 A
Current carrying capacity per port max.	0,5 A

Electrical data | Output

Diagnostic output	active high
Current diagnostic output max.	25 mA

Diagnostics

Status indication LED	green, red
-----------------------	------------

Installation | Connection

Mounting set	M12 x 1
--------------	---------

Device protection | Electrical

Short circuit current min.	0,7 A
Short circuit current max.	0,9 A
Degree of protection (EN IEC 60529)	IP65, IP67, IP68
Protection degree additional condition	inserted, screwed
Short-circuit protected	yes
Overload resistant	yes
Overload current min.	0,7 A
Overload current max.	0,9 A

Mechanical data | Material data

Coating housing	Nickel
Material housing	Zinc die-casting

Mechanical data | Mounting data

Mounting method	Schraubgewinde
Height	145 mm
Width	55 mm
Depth	21 mm

Environmental characteristics | Climatic

Operating temperature min.	-20 °C
Operating temperature max.	60 °C

Conformities, approvals, certificates

Product standard	EN 61131-2
------------------	------------

Cable

No./diameter of wires	16× 0.34 + 5× 0.75 mm ²
Wire isolation	TPE (grpk, wh, rd, bl, gn, whgn, ye, brgn, gr, whye, pk, yebr, rd, whgr, bk, grbr, vi, br, bl, gnye)
C-track properties	5 Mio.
Outer Ø	11.5 mm ±5%

Cable number	403
Approval (cable)	UL (AWM-Style 20233/10042), CSA; CE conform
Material wire	Cu wire, bare
Resistor (core)	max. 57 Ω/km (0.34 mm ²), max. 26 Ω/km (0.75 mm ²); (20 °C)
Single wire Ø (core)	0.1 mm
Diameter (core)	16× 0.34 + 5× 0.75 mm ²
AWG	similar to AWG 22 (0.34 mm ²); similar to AWG 18 (0.75 mm ²)
Material wire isolation	TPE-E
Shore hardness wire isolation	55 ±5 D
Shield	yes
Shore hardness jacket	85 ±5 A
Jacket Color	gray
Nominal voltage	300/500 V AC
Test voltage	2000 V AC
Current load capacity	to DIN VDE 0298-4
Temperature range (fixed)	-40...+90 °C
Temperature range (mobile)	-25...+80 °C
Bend radius (fixed)	5× outer Ø
Bend radius (moving)	10× outer Ø
Bend radius (moving)	10× outer Ø
No. of bending cycles (C-track)	max. 5 Mio. (25 °C)
Travel speed (C-track)	max. 2 m/s
Acceleration (C-track)	max. 5 m/s ²
Material jacket	PUR (UL/CSA)

Connection type 1

Family construction form	free cable end
No. of poles	21

Connection type 2

Family construction form	M12
Gender	female
Color contact carrier	black
Coding	A
No. of poles	5

Commercial data

customs tariff number	85444290
GTIN	4048879063739
Packaging unit	1