

SVS VALVE PLUG FORM A 18MM FIELD-WIREABLE

12...30V DC LED M16x1.5 Power Switch

Form A (18 mm)

12...30 V DC

LED and switching amplifier

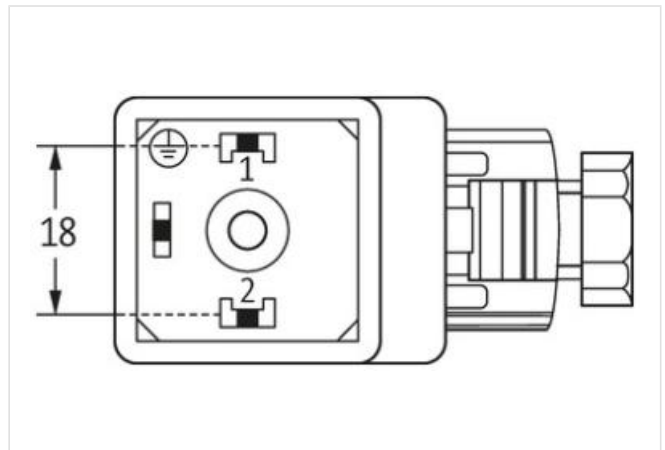
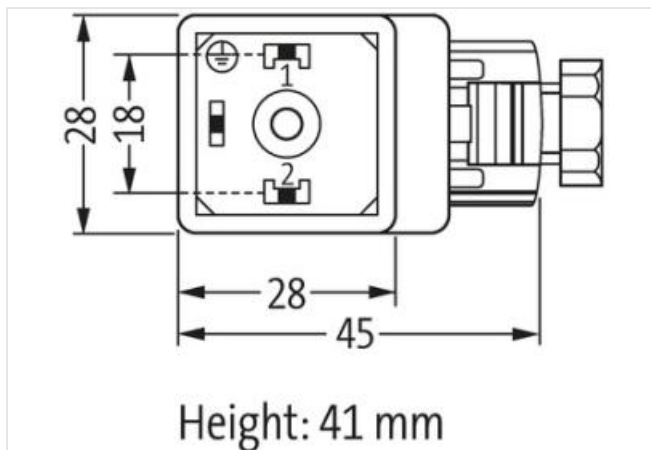
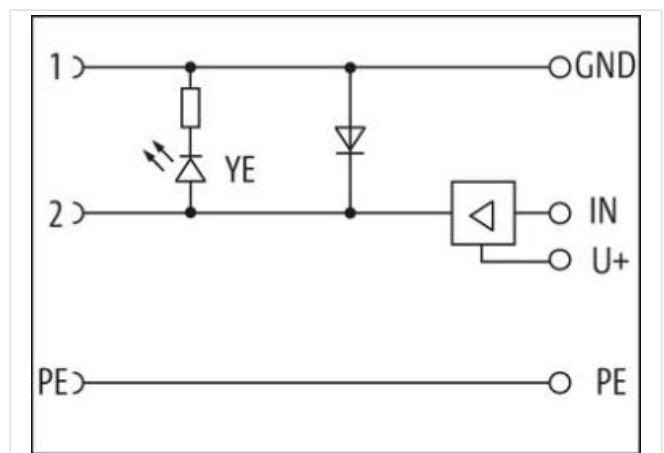
metric

Plastic housings with good resistance against chemicals and oils.

The resistance to aggressive media should be individually tested for your application. Further details on request.

[Link to Product](#)

Illustration



Product may differ from Image



Side 1

Degree of protection (EN IEC 60529)

IP65

Commercial data

ECLASS-6.0

27279221

| | |
|-----------------------|---------------|
| ECLASS-7.0 | 27440104 |
| ECLASS-8.0 | 27440104 |
| ECLASS-9.0 | 27440102 |
| ECLASS-10.1 | 27440105 |
| ECLASS-11.1 | 27440105 |
| ECLASS-12.0 | 27440105 |
| ETIM-5.0 | EC002062 |
| customs tariff number | 85366990 |
| GTIN | 4048879187398 |
| Packaging unit | 1 |

Electrical data | Supply

| | |
|------------------------------------|------|
| Operating voltage DC min. | 12 V |
| Operating voltage DC max. | 30 V |
| Current operating per contact max. | 2 A |

Diagnostics

| | |
|-----------------------|--------|
| Status indication LED | yellow |
|-----------------------|--------|

Installation

| | |
|-------------------------------|---------------------|
| Connection cross section max. | 1,5 mm ² |
|-------------------------------|---------------------|

Installation | Connection

| | |
|------------------------|----------------|
| Connection information | field-wireable |
| Tightening torque | 0,4 Nm |
| Mounting set | M16 x 1.5 |

Installation | Pin assignment

| | |
|--------------|--------|
| No. of poles | 2 + PE |
|--------------|--------|

Device protection | Electrical

| | |
|--|-------------------|
| Additional condition protection degree | inserted, screwed |
| Short-circuit protected | yes |

Mechanical data | Mounting data

| | |
|---------------------|-------|
| fastening screw | M3 |
| Clamping range min. | 5 mm |
| Clamping range max. | 10 mm |

Environmental characteristics | Climatic

| | |
|----------------------------|--------|
| Operating temperature min. | -20 °C |
| Operating temperature max. | 60 °C |