

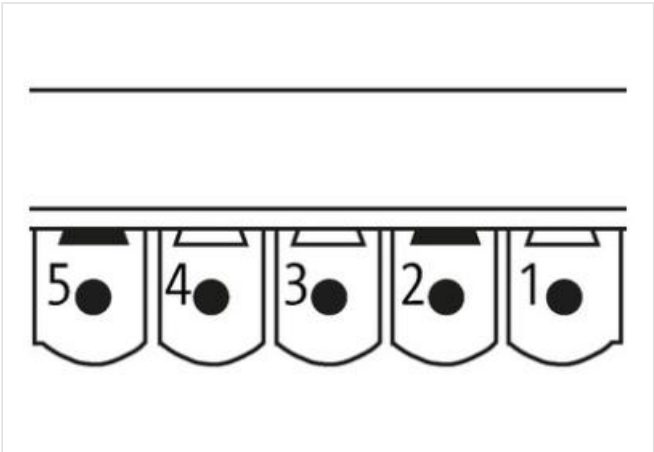
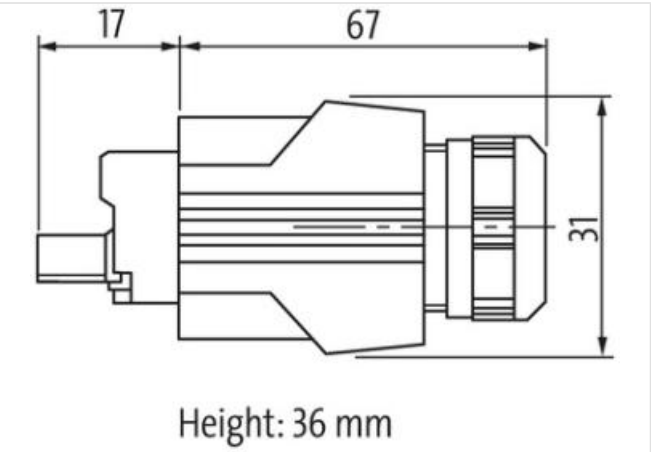
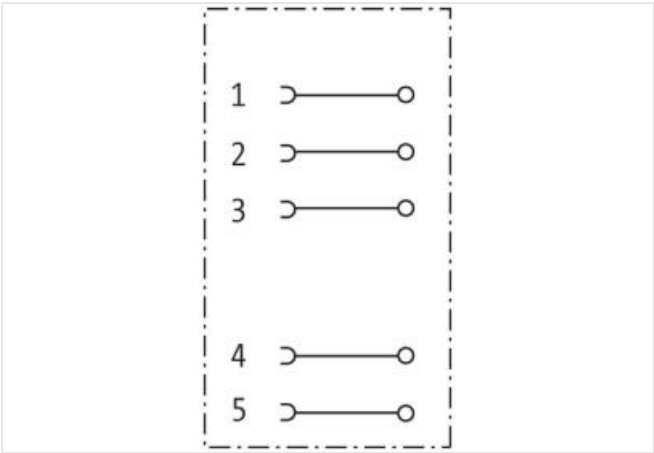
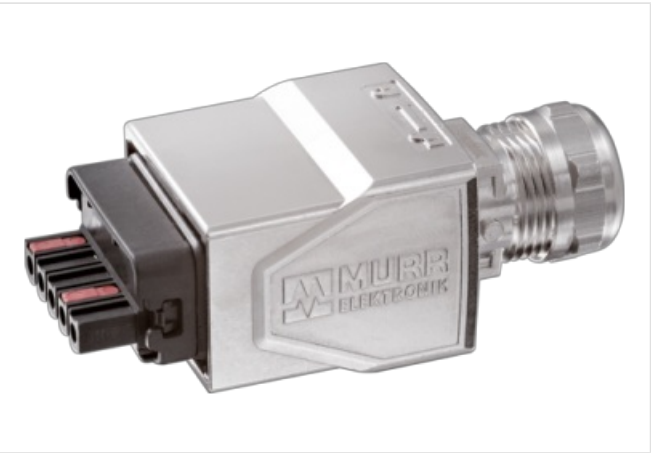
Push Pull Power male 0° spring-cage connection

5-pol., 0,75 - 2,5mm², 9 - 13mm

Male straight  
PPP, 5-pole  
Spring clamp terminals  
Connection cross section: 0.75...2.5 mm²  
Push Pull Power  
The resistance to aggressive media should be individually tested for your application. Further details on request.

Link to Product

Illustration



Product may differ from Image



Commercial data	
ECLASS-6.0	27279221
ECLASS-7.0	27440104
ECLASS-8.0	27440104
ECLASS-9.0	27440102

ECLASS-10.1	27440101
ECLASS-11.1	27440101
ECLASS-12.0	27440114
ETIM-5.0	EC002635
customs tariff number	85366990
GTIN	4048879113915
Packaging unit	1

#### Electrical data | Supply

Operating voltage AC max.	24 V
Operating voltage DC max.	24 V
Current operating per contact max.	16 A

#### Installation

Connection cross section min.	0,75 mm <sup>2</sup>
Connection cross section max.	2,5 mm <sup>2</sup>
AWG number min.	18
AWG number max.	14

#### Device protection | Electrical

Degree of protection (EN IEC 60529)	IP65, IP67
Additional condition protection degree	inserted, screwed
Pollution Degree	2
Rated surge voltage	4 kV

#### Mechanical data | Material data

Coating housing	Nickeled
Material housing	Zinc die-casting

#### Mechanical data | Mounting data

Clamping range min.	9 mm
Clamping range max.	13 mm

#### Environmental characteristics | Climatic

Operating temperature min.	-40 °C
Operating temperature max.	70 °C

#### Important installation notes

Note on strain relief	Protect the connectors by suitable measures from mechanical loads, e.g. by the usage of cable ties.
Note on bending radius	<b>Attention:</b> Observe the permissible bending radii when laying cables, as the IP protection class can be endangered by excessive bending forces.